

RIDUTTORI COASSIALI **CMG**
HELICAL GEARBOXES **CMG**

B

Indice	Index	Pag. Page
Descrizione	<i>Description</i>	B2
Designazione	<i>Designation</i>	B2
Posizioni di montaggio	<i>Mounting positions</i>	B3
Carichi radiali	<i>Radial loads</i>	B3
Simbologia	<i>Symbols</i>	B3
Dati tecnici	<i>Technical data</i>	B4
Motori applicabili	<i>IEC Motor adapters</i>	B9
Dimensioni	<i>Dimensions</i>	B10

Descrizione

I riduttori coassiali della serie CMG sono caratterizzati da un elevato grado di modularità: partendo da un corpo di base è possibile configurarlo secondo le esigenze dell'applicazione, con flangia o piede.

Caratteristiche comuni a tutta la serie:

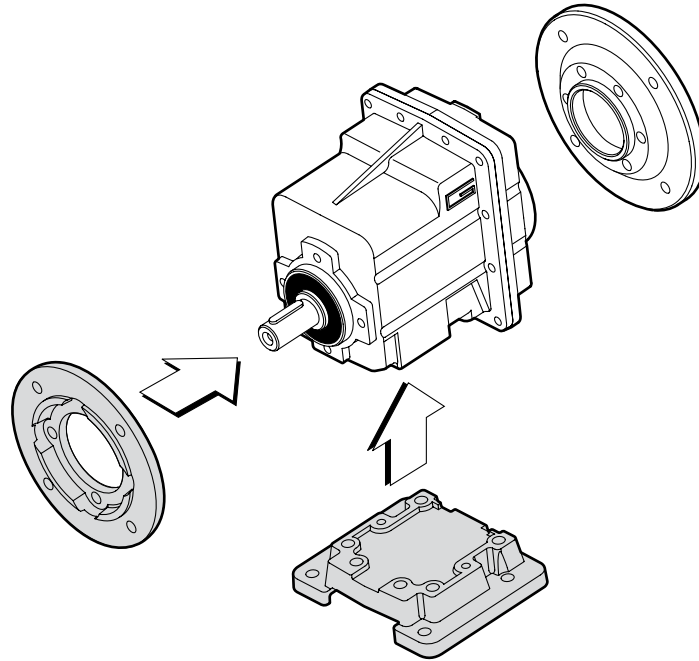
- Carcassa e flangia PAM in pressofusione di alluminio
- Piedi e flange uscita in ghisa
- Ingranaggi sempre rettificati (sia nel 1° che nel 2° stadio)
- Lubrificazione permanente

Description

Helical gearboxes from the CMG series are characterized by modularity: starting from the standard base it is possible to configure the gear according to the applications requirements, with flange or feet.

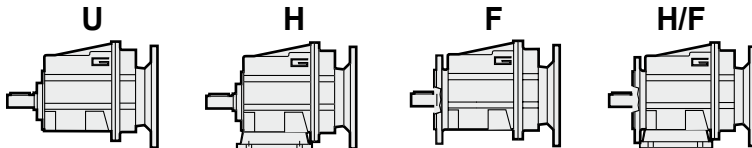
The CMG series has the following characteristics:

- Body and the PAM flange are made from aluminium
- The feet and output flange from iron
- The gears are always rectified for stages 1 and 2
- Permanent lubricant

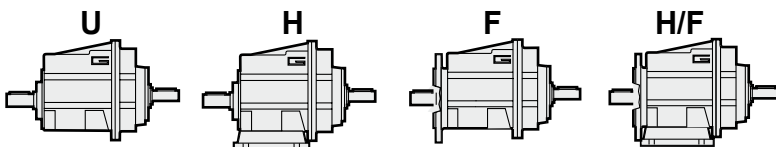


Designazione

Designation



RIDUTTORE / GEARBOX							MOTORE / MOTOR					
CMG	01	2	9.81	H75	P71	B14	O20	71B4	B5	230/400	50	T4
Tipo Type	Grandezza Size	Stadi Stages	Rapporto Ratio	Versione Version	IEC		Diam. Albero uscita Output shaft diam.	Grandezza Size	Forma costitutiva Version	Tensione Voltage	Frequenza Frequency	Pos. morsettiera Terminal board position
CMG	01 02 03 04	2 3	vedi tabella see tables	U... H... F... H.../F...	P63.. — P112..	B5 B14		63.. — 112..	B5 B14			



RIDUTTORE / GEARBOX						
CMGIS	01	2	9.81	U	I20	O20
Tipo Type	Grandezza Size	Stadi Stages	Rapporto Ratio	Versione Version	Diam. Albero entrata Input shaft diam.	Diam. Albero uscita Output shaft diam.
CMGIS	01 02 03 04	2 3	vedi tabella see tables	U... H... F... H.../F...		

Posizioni di montaggio

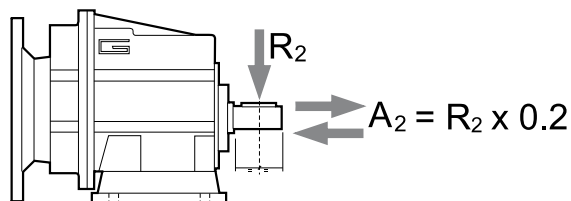
Mounting positions

Tutti i riduttori CMG sono forniti completi di lubrificante sintetico viscosità 320, pertanto possono essere installati in qualunque posizione di montaggio e non necessitano di manutenzione.

All CMG reduction units are supplied complete with synthetic lubricant viscosity 320. For this reason they can be installed in any assembly position and do not require maintenance.

Carichi radiali

Radial loads



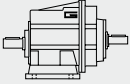
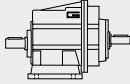
n_2 [min ⁻¹]	R_2 [N]			
	CMG 01	CMG 02	CMG 03	CMG 04
400	921	1842	2395	2866
250	1077	2154	2801	3353
180	1323	2554	3321	3897
150	1406	2714	3529	4244
120	1631	3467	3801	4572
100	1842	3684	4507	5234
80	1984	3969	5042	5991
60	2184	4368	5549	6594
40	2500	5000	6500	8000
10	2500	5000	6500	8000

Simbologia

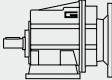

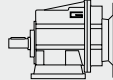

Symbols

n_1 [min ⁻¹]	Velocità in ingresso	Input speed
n_2 [min ⁻¹]	Velocità in uscita	Output speed
i	Rapporto di riduzione	Ratio
P_1 [kW]	Potenza in entrata	Input power
M_n [Nm]	Coppia nominale in uscita	Nominal output torque
sf	Fattore di servizio	Service factor
R_d %	Rendimento dinamico	Dynamic efficiency
R_2 [N]	Carico radiale ammissibile in uscita	Permitted output radial load

Dati tecnici
 n_1 1400 min⁻¹
Technical data

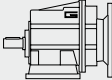

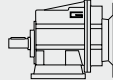

	n_2 [min ⁻¹]	M_2 [Nm]	P1 [kW]	i		n_2 [min ⁻¹]	M_2 [Nm]	P1 [kW]	i
CMGIS 012					CMGIS 032				
	367	60	2.4	3.82		374	150	6.1	3.74
	302	60	2.0	4.63		311	150	5.1	4.50
	246	60	1.6	5.69		255	150	4.2	5.48
	181	80	1.6	7.72		222	180	4.4	6.31
	153	80	1.3	9.17		176	180	3.5	7.93
	143	80	1.2	9.81		154	180	3.0	9.08
	118	100	1.3	11.90		128	180	2.5	10.93
	101	120	1.3	13.80		111	250	3.0	12.60
	95.7	120	1.3	14.62		105	250	2.9	13.30
	78.4	120	1.0	17.86		91.5	280	2.8	15.30
	70.6	120	0.9	19.83		76.9	280	2.3	18.21
	59.4	120	0.8	23.56		72.8	280	2.2	19.24
	39.5	120	0.5	35.47		66.2	280	2.0	21.15
	30.5	120	0.4	45.89		45.8	300	1.5	30.57
	26.3	120	0.3	53.33		31.7	300	1.0	44.18
						27.3	300	0.9	51.30
CMGIS 013					CMGIS 033				
	30.0	120	0.40	46.61		31.0	300	1.0	45.21
	25.3	120	0.34	55.36		22.8	300	0.76	61.32
	22.1	120	0.30	63.22		19.2	300	0.64	72.83
	18.6	120	0.25	75.08		14.4	300	0.48	97.45
	15.7	120	0.21	89.17		12.1	300	0.40	115.74
	12.4	120	0.17	113.05		9.9	300	0.33	140.81
	10.4	120	0.14	134.27		8.0	300	0.27	174.26
	8.1	120	0.11	173.72		6.2	300	0.21	225.47
	6.9	120	0.09	202.16		5.3	300	0.18	262.05
	5.4	120	0.07	261.57		4.3	300	0.14	325.79
	4.6	120	0.06	304.00		3.7	300	0.12	378.64
	3.6	120	0.05	393.33					
CMGIS 022					CMGIS 042				
	383	100	4.2	3.66		374	230	9.4	3.74
	316	100	3.4	4.43		311	230	7.8	4.50
	257	100	2.8	5.45		255	230	6.4	5.48
	190	120	2.5	7.39		222	260	6.3	6.31
	159	120	2.1	8.78		176	260	5.0	7.93
	141	120	1.8	9.93		154	280	4.7	9.08
	116	200	2.5	12.05		128	280	3.9	10.93
	106	200	2.3	13.21		111	350	4.2	12.60
	94.6	200	2.1	14.81		105	350	4.0	13.30
	81.9	160	1.4	17.10		91.5	420	4.2	15.30
	69.7	200	1.5	20.08		76.9	420	3.5	18.21
	58.7	200	1.3	23.85		72.8	420	3.3	19.24
	39.0	200	0.9	35.91		45.8	500	2.5	30.57
	30.1	200	0.7	46.46		31.7	500	1.7	44.18
	25.9	200	0.6	54.00		27.3	500	1.5	51.30
CMGIS 023					CMGIS 043				
	29.7	200	0.66	47.19		31.0	500	1.7	45.21
	25.0	200	0.56	56.05		22.8	500	1.3	61.32
	21.9	200	0.49	64.01		19.2	500	1.1	72.83
	18.4	200	0.41	76.02		14.4	500	0.80	97.45
	15.5	200	0.35	90.29		12.1	500	0.67	115.74
	12.2	200	0.27	114.46		9.9	500	0.55	140.81
	10.3	200	0.23	135.95		8.0	500	0.45	174.26
	8.0	200	0.18	175.89		6.2	500	0.35	225.47
	6.8	200	0.15	204.69		5.3	500	0.30	262.05
	5.3	200	0.12	264.84		4.3	500	0.24	325.79
	4.5	200	0.10	307.80		3.7	500	0.21	378.64
	3.5	200	0.08	398.25					

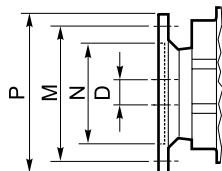
Dati tecnici
Technical data

P_1 [kW]	n_2 [min ⁻¹]	M_2 [Nm]	sf	i			P_1 [kW]	n_2 [min ⁻¹]	M_2 [Nm]	sf	i																
0.37																											
71B4 (1400 min ⁻¹)	367	9.3	6.5	3.82	CMG012	B5/B14	80A4 (1400 min ⁻¹)	29.7	166	1.2	47.19	CMG023	B5/B14														
	302	11.2	5.3	4.63				25.0	198	1.0	56.05			CMG032	B5/B14												
	246	13.8	4.4	5.69				21.9	226	0.89	64.01					CMG033	B5/B14										
	181	18.7	4.3	7.72				45.8	110	2.7	30.57	CMG043	B5/B14														
	153	22.2	3.6	9.17										31.7	159			1.9	44.18	B5/B14							
	143	23.8	3.4	9.81												27.3	185				1.6	51.30	B5/B14				
	118	28.8	3.5	11.90				31.0	159	1.9	45.21	B5/B14															
	101	33	3.6	13.80									22.8	216	1.4			61.32	B5/B14								
	95.7	35	3.4	14.62												19.2	257			1.2	72.83	B5/B14					
	78.4	43	2.8	17.86				14.4	344	0.87	97.45	B5/B14															
	70.6	48	2.5	19.83	22.8	216							2.3	61.32	B5/B14												
	59.4	57	2.1	23.56												19.2	257	1.9	72.83	B5/B14							
	39.5	86	1.4	35.47				14.4	344	1.5	97.45	B5/B14															
	30.5	111	1.1	45.89	12.1	408							1.2	115.74	B5/B14												
	26.3	129	0.93	53.33												9.9	497	1.0	140.81	B5/B14							
	30.0	111	1.1	46.61				CMG013	B5/B14	8.0	615	0.81									174.26	B5/B14					
		25.3	131	0.91	55.36																						
		22.1	150	0.80	63.22																						
	81.9	41	3.9	17.10	CMG022	B5/B14		80B4 (1400 min ⁻¹)	367	18.8	3.2	3.82	CMG012	B5/B14													
		58.7	58	3.5					23.85	302	22.7	2.6			4.63	B5/B14											
39.0		87	2.3	35.91			246		27.9	2.1	5.69	B5/B14															
30.1		113	1.8	46.46			181		38	2.1	7.72				B5/B14												
25.9		131	1.5	54.00			153		45	1.8	9.17						B5/B14										
29.7	112	1.8	47.19	CMG023	B5/B14	143	48	1.7	9.81	B5/B14																	
	25.0	133	1.5			56.05	118	58	1.7		11.90		B5/B14														
	21.9	152	1.3			64.01	101	68	1.8		13.80	B5/B14															
18.4	180	1.1	76.02	95.7	72	1.7	14.62	B5/B14																			
15.5	214	0.93	90.29	78.4	88	1.4	17.86		B5/B14																		
31.7	107	2.8	44.18	CMG032	B5	70.6	97			1.2	19.83	B5/B14															
	27.3	124	2.4			51.30	59.4	116		1.0	23.56		B5/B14														
22.8	145	2.1	61.32	CMG033	B5/B14	116	59	3.4	12.05	CMG022	B5/B14																
	19.2	173	1.7			72.83	106	65	3.1			13.21	B5/B14														
	14.4	231	1.3			97.45	94.6	73	2.8			14.81		B5/B14													
	12.1	275	1.1			115.74	81.9	84	1.9			17.10			B5/B14												
	9.9	334	0.90			140.81	69.7	99	2.0			20.08				B5/B14											
	12.1	275	1.8			115.74	CMG043	B5/B14	58.7			117					1.7	23.85	B5/B14								
9.9		334	1.5	140.81	39.0	176			1.1	35.91	B5/B14																
8.0		413	1.2	174.26	30.1	228			0.88	46.46		B5/B14															
6.2		535	0.93	225.47	66.2	104			2.7	21.15			CMG032	B5/B14													
45.8	150	2.0	30.57	31.7	217	1.4	44.18	B5/B14																			
	31.7	217	1.4						44.18	CMG033	B5/B14																
	27.3	252	1.2						51.30																		
31.0	217	1.4	45.21	22.8	295	1.0	61.32	CMG043	B5/B14																		
	22.8	295	1.7							61.32	B5/B14																
	19.2	350	1.4							72.83																	
14.4	469	1.1	97.45	12.1	557	0.90	115.74	B5/B14																			
8.0	615	0.81	174.26																								
0.55																											
80A4 (1400 min ⁻¹)	367	13.8	4.4	3.82	CMG012	B5/B14	80C4 (1400 min ⁻¹)	23.0	2.6	3.82	CMG012	B5/B14															
	302	16.7	3.6	4.63				302	27.9	2.2			4.63	B5/B14													
	246	20.5	2.9	5.69				246	34	1.8			5.69		B5/B14												
	181	27.8	2.9	7.72				181	46	1.7			7.72			B5/B14											
	153	33	2.4	9.17				153	55	1.4			9.17				B5/B14										
	143	35	2.3	9.81				143	59	1.4	9.81	B5/B14															
	118	43	2.3	11.90				118	72	1.4	11.90		B5/B14														
	101	50	2.4	13.80				101	83	1.4	13.80			B5/B14													
	95.7	53	2.3	14.62				95.7	88	1.4	14.62				B5/B14												
	78.4	64	1.9	17.86				78.4	108	1.1	17.86					B5/B14											
	70.6	71	1.7	19.83	70.6	119		1.0	19.83	B5/B14																	
	59.4	85	1.4	23.56	367	23.0		2.6	3.82		CMG012	B5/B14															
	39.5	128	0.94	35.47									302	27.9			2.2	4.63	B5/B14								
	81.9	62	2.6	17.10											CMG022					B5/B14	246	34	1.8	5.69			
		69.7	72	2.8												20.08									181	46	1.7
		58.7	86	2.3						23.85						153											
	39.0	129	1.5	35.91	143	59		1.4	9.81																		
	30.1	167	1.2	46.46						118	72	1.4	11.90														
	25.9	194	1.0	54.00										101	83	1.4	13.80										
	80A4 (1400 min ⁻¹)	367	13.8	4.4	3.82	CMG012		B5/B14	302									27.9	2.2	4.63							
302		16.7	3.6	4.63	246		34			1.8	5.69																
246		20.5	2.9	5.69								181	46	1.7	7.72												
181	27.8	2.9	7.72	153		55		1.4	9.17																		
153	33	2.4	9.17		143		59			1.4	9.81																
143	35	2.3	9.81									118	72	1.4	11.90												
118	43	2.3	11.90	101		83		1.4	13.80																		
101	50	2.4	13.80		95.7		88			1.4	14.62																
95.7	53	2.3	14.62									78.4	108	1.1	17.86												
78.4	64	1.9	17.86	70.6		119		1.0	19.83																		
70.6	71	1.7	19.83		59.4		116			1.0	23.56																
59.4	85	1.4	23.56									66.2	104	2.7	21.15												
39.5	128	0.94	35.47	45.8		150		2.0	30.57																		
81.9	62	2.6	17.10		CMG022		B5/B14			31.7	217					1.4	44.18										
	69.7	72	2.8									20.08	27.3	252	1.2			51.30									
	58.7	86	2.3	23.85		CMG032		B5/B14																			
39.0	129	1.5	35.91	31.0	217		1.4		45.21																		
30.1	167	1.2	46.46							22.8	295	1.0	61.32														
25.9	194	1.0	54.00			CMG033		B5/B14																			
80A4 (1400 min ⁻¹)	367	13.8	4.4	3.82	CMG012		B5/B14		80C4 (1400 min ⁻¹)					23.0	2.6	3.82	CMG012	B5/B14									
	302	16.7	3.6	4.63						302	27.9	2.2	4.63														
	246	20.5	2.9	5.69		246		34											1.8	5.69							
181	27.8	2.9	7.72	181	46		1.7		7.72																		
153	33	2.4	9.17							153	55	1.4	9.17														
143	35	2.3	9.81			143		59						1.4	9.81												
118	43	2.3	11.90	118	72		1.4		11.90																		
101	50	2.4	13.80							101	83	1.4	13.80														
95.7	53	2.3	14.62			95.7		88						1.4	14.62												
78.4	64	1.9	17.86	78.4	108		1.1		17.86																		
70.6	71	1.7	19.83							70.6	119	1.0	19.83														
59.4	85	1.4	23.56			59.4		116						1.0	23.56												
39.5	128	0.94	35.47	66.2	104		2.7		21.15																		
81.9	62	2.6	17.10							CMG022	B5/B14	45.8	150			2.0	30.57										
	69.7	72	2.8			20.08		31.7						217	1.4			44.18									
	58.7	86	2.3	23.85	27.3	252	1.2		51.30																		
39.0	129	1.5	35.91	CMG032						B5/B14																	
30.1	167	1.2	46.46					31.0			217	1.4	45.21														
25.9	194	1.0	54.00		22.8	295	1.0		61.32																		
80A4 (1400 min ⁻¹)	367	13.8	4.4	3.82						CMG012				B5/B14	80C4 (1400 min ⁻¹)	23.0	2.6	3.82	CMG012	B5/B14							
	302	16.7	3.6	4.63				302			27.9	2.2	4.63														
	246	20.5	2.9	5.69	246	34	1.8		5.69																		
181	27.8	2.9	7.72	181						46				1.7	7.72												
153	33	2.4	9.17					153			55	1.4	9.17														
143	35	2.3	9.81		143	59	1.4		9.81																		
118	43	2.3	11.90	118						72				1.4	11.90												
101	50	2.4	13.80					101			83	1.4	13.80														
95.7	53	2.3	14.62		95.7	88	1.4		14.62																		
78.4	64	1.9	17.86	78.4						108				1.1	17.86												
70.6	71	1.7	19.83					70.6			119	1.0	19.83														
59.4	85	1.4	23																								

Dati tecnici

Technical data

P_1 [kW]	n_2 [min ⁻¹]	M_2 [Nm]	sf	i			P_1 [kW]	n_2 [min ⁻¹]	M_2 [Nm]	sf	i																																																																																				
0.92							1.15																																																																																								
80C4 (1400 min ⁻¹)	116	73	2.8	12.05	CMG022	B5/B14	90L4 (1400 min ⁻¹)	367	38	1.6	3.82	CMG012	B5/B14																																																																																		
	106	80	2.5	13.21			B5/B14	302	45	1.3	4.63			B5/B14																																																																																	
	94.6	89	2.2	14.81			B5/B14	246	56	1.1	5.69			B5/B14																																																																																	
	106	80	2.5	13.21			B5/B14	181	76	1.1	7.72			B5/B14																																																																																	
	94.6	89	2.2	14.81			B5/B14	383	36	2.8	3.66			CMG022	B5/B14																																																																																
	81.9	103	1.6	17.10			B5/B14																																																																																								
	69.7	121	1.7	20.08	B5/B14																																																																																										
	58.7	144	1.4	23.85	B5/B14																																																																																										
	39.0	216	0.92	35.91	B5/B14																																																																																										
	76.9	110	2.6	18.21	CMG032	B5/B14	160					86	1.4			8.78	B5/B14																																																																														
	72.8	116	2.4	19.24			141	98	1.2	9.93	B5/B14																																																																																				
	66.2	127	2.2	21.15			116	118	1.7	12.05	B5/B14																																																																																				
	45.8	184	1.6	30.57			106	130	1.5	13.21	B5/B14																																																																																				
	90S4 (1400 min ⁻¹)	31.7	266	1.1	44.18	CMG033	B5/B14	81.9	168	0.95	17.10	CMG032	B5/B14																																																																																		
		31.0	267	1.1	45.21			69.7	197	1.0	20.08			B5/B14																																																																																	
		22.8	362	1.4	61.32			CMG043	B5/B14	111	124			2.0	12.60	B5/B14																																																																															
19.2		430	1.2	72.83	105					131	1.9			13.30	B5/B14																																																																																
14.4		575	0.87	97.45	91.5	150	1.9			15.30	B5/B14																																																																																				
76.9		179	1.6	18.21	72.8	189	1.5			19.24	B5/B14																																																																																				
90LB4 (1400 min ⁻¹)		31.7	266	1.1	44.18	CMG033	B5/B14	66.2	208	1.3	21.15	CMG042	B5/B14																																																																																		
		31.0	267	1.1	45.21			45.8	300	1.0	30.57			B5/B14																																																																																	
		22.8	362	1.4	61.32			CMG043	B5/B14	76.9	179			2.3	18.21	B5/B14																																																																															
		19.2	430	1.2	72.83					72.8	189			2.2	19.24	B5/B14																																																																															
		14.4	575	0.87	97.45	45.8	300			1.7	30.57	B5/B14																																																																																			
		76.9	179	1.6	18.21	27.3	504			0.99	51.30	B5/B14																																																																																			
		90LB4 (1400 min ⁻¹)	31.0	267	1.1	45.21	CMG033	B5/B14	31.0	435	1.1	45.21	CMG043	B5/B14																																																																																	
			22.8	362	1.4	61.32			22.8	590	0.85	61.32			B5/B14																																																																																
			19.2	430	1.2	72.83			CMG043	B5/B14	1.85	90LB4 (1400 min ⁻¹)			367	46	1.3	3.82	CMG012	B5/B14																																																																											
			14.4	575	0.87	97.45															CMG042	B5/B14	302	56	1.1	4.63	CMG022	B5/B14																																																																			
	76.9		179	1.6	18.21	383	44	2.3					3.66	CMG022															B5/B14																																																																		
	72.8		189	2.2	19.24																									316	54	1.9	4.43	CMG022	B5/B14																																																												
	66.2		127	2.2	21.15				257	66																										1.5	5.45	CMG022	B5/B14																																																								
	45.8		184	1.6	30.57																189	90																		1.3	7.39	CMG022	B5/B14																																																				
	31.7		266	1.1	44.18																																							160	106	1.1	8.78	CMG022	B5/B14																																														
	31.0		267	1.1	45.21																																													141	120	1.0	9.93	CMG022	B5/B14																																								
22.8	362		1.4	61.32	116																																																			146	1.4	12.05	CMG022	B5/B14																																			
19.2	430		1.2	72.83																																																									106	160	1.2	13.21	CMG022	B5/B14																													
14.4	575		0.87	97.45																																																															94.6	179	1.1	14.81	CMG022	B5/B14																							
76.9	179		1.6	18.21																																																																					154	110	1.6	9.08	CMG032	B5/B14																	
72.8	189		2.2	19.24																																																																											128	132	1.4	10.93	CMG032	B5/B14											
66.2	127		2.2	21.15																																																																																	111	153	1.6	12.60	CMG032	B5/B14					
45.8	184	1.6	30.57	105																																																																																							161	1.6	13.30	CMG032	B5/B14
31.7	266	1.1	44.18																																																																																												
31.0	267	1.1	45.21								76.9	221			1.3	18.21	CMG032	B5/B14																																																																													
22.8	362	1.4	61.32																72.8	233			1.2	19.24	CMG032	B5/B14																																																																					
19.2	430	1.2	72.83			66.2	256	1.1					21.15	CMG032													B5/B14																																																																				
14.4	575	0.87	97.45																									45.8	370	0.81	30.57	CMG032	B5/B14																																																														
76.9	179	1.6	18.21						76.9	221																								1.9	18.21	CMG042	B5/B14																																																										
72.8	189	2.2	19.24																		72.8	233																1.8	19.24	CMG042	B5/B14																																																						
66.2	127	2.2	21.15																																							45.8	370	1.3	30.57	CMG042	B5/B14																																																
45.8	184	1.6	30.57																																													31.7	535	0.93	44.18	CMG042	B5/B14																																										
31.7	266	1.1	44.18		27.3																																																	621	0.80	51.30	CMG042	B5/B14																																					
31.0	267	1.1	45.21																																																								31.0	536	0.93	45.21	CMG043	B5/B14																															
22.8	362	1.4	61.32																																																														76.9	221	1.9	18.21	CMG042	B5/B14																									
19.2	430	1.2	72.83																																																																				72.8	233	1.8	19.24	CMG042	B5/B14																			
14.4	575	0.87	97.45																																																																										45.8	370	1.3	30.57	CMG042	B5/B14													
76.9	179	1.6	18.21																																																																																31.7	535	0.93	44.18	CMG042	B5/B14							
72.8	189	2.2	19.24	27.3																																																																																					621	0.80	51.30	CMG042	B5/B14		
66.2	127	2.2	21.15																																																																																											31.0	536
45.8	184	1.6	30.57								76.9	221			1.9	18.21	CMG042	B5/B14																																																																													
31.7	266	1.1	44.18																72.8	233			1.8	19.24	CMG042	B5/B14																																																																					
31.0	267	1.1	45.21			45.8	370	1.3					30.57	CMG042													B5/B14																																																																				
22.8	362	1.4	61.32																									31.7	535	0.93	44.18	CMG042	B5/B14																																																														
19.2	430	1.2	72.83						27.3	621																								0.80	51.30	CMG042	B5/B14																																																										
14.4	575	0.87	97.45																		31.0	536																0.93	45.21	CMG043	B5/B14																																																						



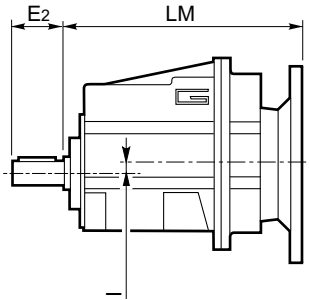
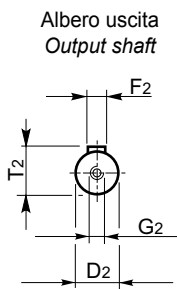
	IEC	N	M	P	D F8	i (rapporto / ratio)																	
						3.82	4.63	5.69	7.72	9.17	9.81	11.90	13.80	14.62	17.86	19.83	23.56	35.47	45.89	53.33			
CMG012	90 B5	130	165	200	24																		
	90 B14	95	115	140																			
	80 B5	130	165	200	19																		
	80 B14	80	100	120																			
	71 B5	110	130	160	14	B																	
	71 B14	70	85	105																			
63 B5	95	115	140	11	BS																		
						46.61	55.36	63.22	75.08	89.17	113.05	134.27	173.72	202.16	261.57	304.00	393.33						
CMG013	90 B5	130	165	200	24																		
	90 B14	95	115	140																			
	80 B5	130	165	200	19																		
	80 B14	80	100	120																			
	71 B5	110	130	160	14	B																	
	71 B14	70	85	105																			
63 B5	95	115	140	11	BS																		
						3.66	4.43	5.45	7.39	8.78	9.93	12.05	13.21	14.81	17.10	20.08	23.85	35.91	46.46	54.00			
CMG022	90 B5	130	165	200	24																		
	90 B14	95	115	140																			
	80 B5	130	165	200	19																		
	80 B14	80	100	120																			
	71 B5	110	130	160	14	B																	
	71 B14	70	85	105																			
63 B5	95	115	140	11	BS																		
						47.19	54.05	64.01	76.02	90.29	114.46	135.95	175.89	204.69	264.84	307.80	398.25						
CMG023	90 B5	130	165	200	24																		
	90 B14	95	115	140																			
	80 B5	130	165	200	19																		
	80 B14	80	100	120																			
	71 B5	110	130	160	14	B																	
	71 B14	70	85	105																			
63 B5	95	115	140	11	BS																		
						3.74	4.50	5.48	6.31	7.93	9.08	10.93	12.60	13.30	15.30	18.21	19.24	21.15	30.57	44.18	51.30		
CMG032	100/112B5	180	215	250	28																		
	100/112B14	110	130	160																			
	90 B5	130	165	200	24																		
	90 B14	95	115	140																			
	80 B5	130	165	200	19																		
	80 B14	80	100	120																			
71 B5	110	130	160	14	BS																		
						3.74	4.50	5.48	6.31	7.93	9.08	10.93	12.60	13.30	15.30	18.21	19.24	30.57	44.18	51.30			
CMG042	100/112B5	180	215	250	28																		
	100/112B14	110	130	160																			
	90 B5	130	165	200	24																		
	90 B14	95	115	140																			
	80 B5	130	165	200	19																		
	80 B14	80	100	120																			
71 B5	110	130	160	14	BS																		
						45.21	61.32	72.83	97.45	115.74	140.81	174.26	225.47	262.05	325.79	378.64							
CMG033 CMG043	90 B5	130	165	200	24																		
	90 B14	95	115	140																			
	80 B5	130	165	200	19																		
	80 B14	80	100	120																			
	71 B5	110	130	160	14	B																	
	71 B14	70	85	105																			
63 B5	95	115	140	11	BS																		

CMG CMGIS	A	B	I	j	LM	LR	Albero entrata / Input shaft					Albero uscita / Output shaft					Peso / Weight [kg]	
							D ₁ h6	E ₁	F ₁	G ₁	T ₁	D ₂ h6	E ₂	F ₂	G ₂	T ₂	CMG	CMGIS
012	124	93	6.5	62	181.5	173.5	16	40	5	M6	18	20	40	6	M6	22.5	5.3	5.0
013		112	43		254.5	246.5						(16)	(40)			(18)		
022	124	98	11.5	67	191.5	183.5	16	40	5	M6	18	25	50	8	M8	28	6.2	5.9
023		117	48		264.5	256.5												
032	156	118	5	92	222	214.5	19	40	6	M6	21.5	30	60	8	M10	33	11.3	11.2
033			41.5		288	280												
042	156	128	15	82	235	227.5	19	40	6	M6	21.5	35	70	10	M12	38	13.2	13.1
043			51.5		301	293												

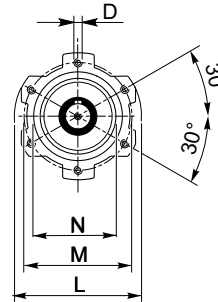
Versione U / U Version						
CMG CMGIS	H	K	L	M	N f7	O
012 013	8.5	13.5	95	76	60	n°4 M8x15
022 023	8.5	13.5	95	76	60	n°4 M8x15
032 033	9	15	127	110	90	n°6 M8x19
042 043	9	15	127	110	90	n°6 M8x19

CMG..U

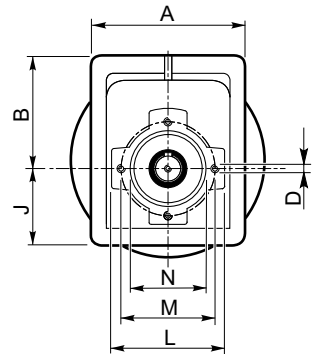
CMG..2 U



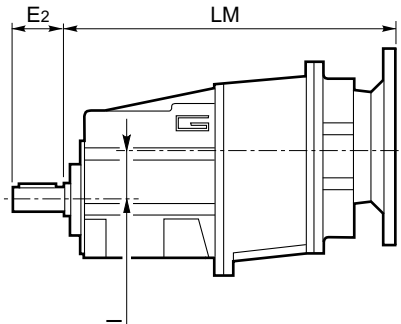
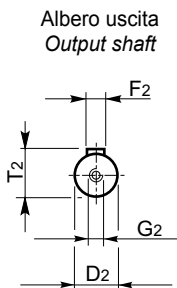
032-042



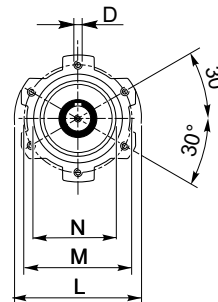
012-022



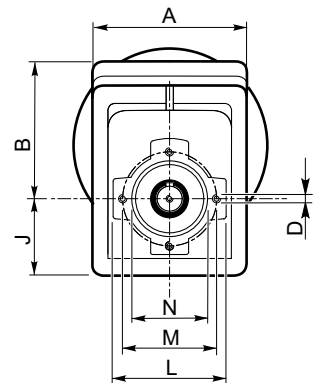
CMG..3 U



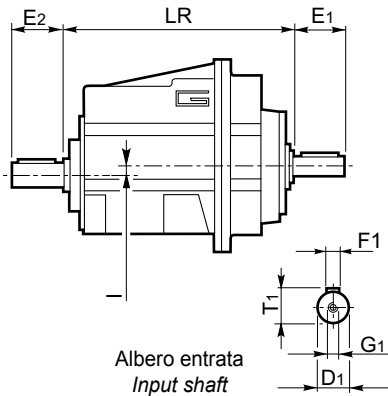
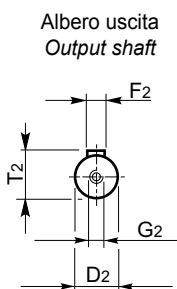
033-043



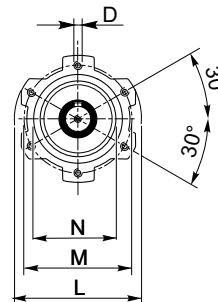
013-023



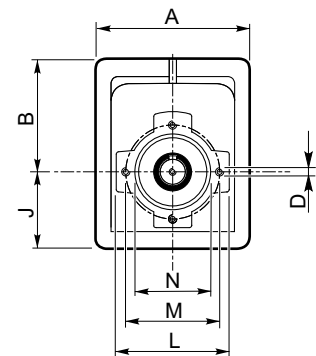
CMGIS..2 U



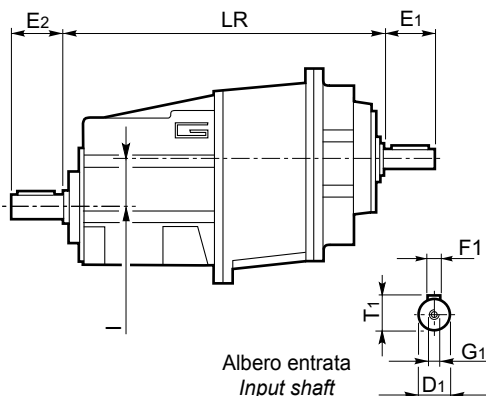
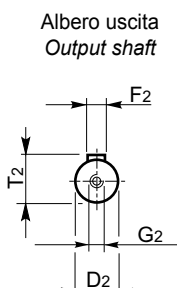
032-042



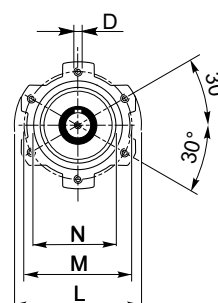
012-022



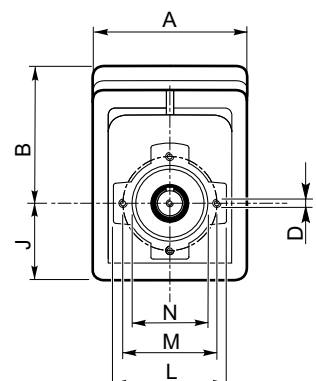
CMGIS..3 U



033-043



013-023



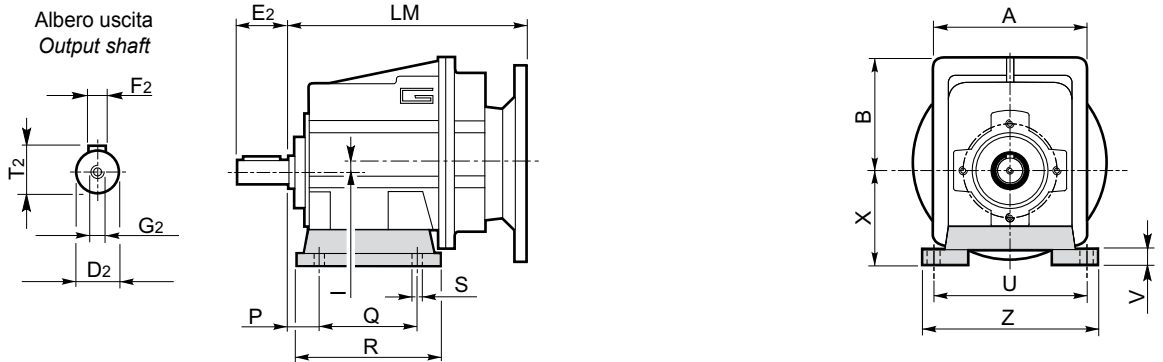
CMG CMGIS	A	B	I	LM	LR	Albero entrata / Input shaft					Albero uscita / Output shaft					Peso / Weight* [kg]	
						D ₁ h6	E ₁	F ₁	G ₁	T ₁	D ₂ h6	E ₂	F ₂	G ₂	T ₂	CMG	CMGIS
012	124	93	6.5	195	187	16	40	5	M6	18	20 (16) (25)	40 (40) (50)	6	M6	22.5 (18) (28)	5.3	5.0
013		112	43	268	260											7.8	7.5
022	124	98	11.5	205	197	16	40	5	M6	18	25	50	8	M8	28	6.2	5.9
023		117	48	278	270											8.7	8.4
032	156	118	5	237	229.5	19	40	6	M6	21.5	30	60	8	M10	33	11.3	11.2
033			41.5	303	295	16		5		18						13.6	13.3
042	156	128	15	250	242.5	19	40	6	M6	21.5	35	70	10	M12	38	13.2	13.1
043			51.5	316	308	16		5		18						15.5	15.2

* Versione U / U Version

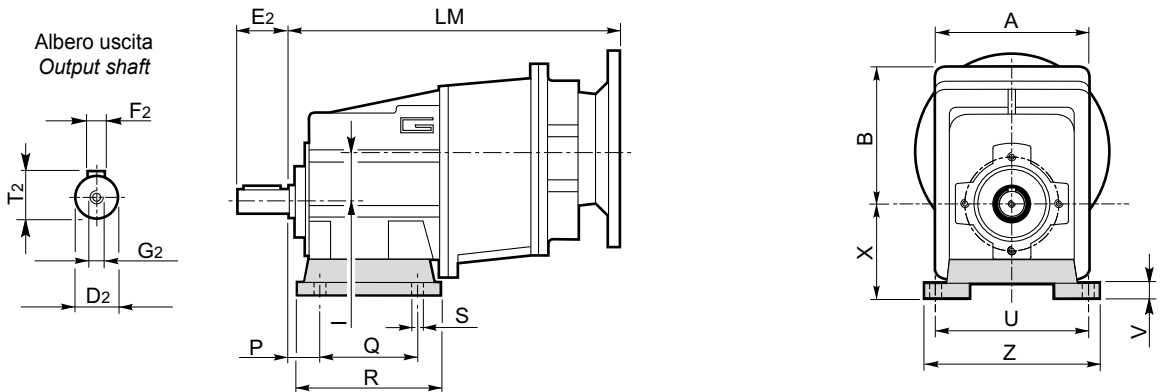
Versione H / H Version										
CMG CMGIS	P	Q	R	S	U	V	X	Z	Piede / Foot	
									Tipo / Type	Peso / Weight [kg]
012 013	18	80	118	9	110	12	75	140	H75	1.0
	18	50 - 87	118	9	110	12	85	130	H85	1.2
	25	130	154	9	110	12	90	135	H90	1.5
	25	85	120	9	120	12	80	140	H80	1.1
	18	47.5 - 60	135	11	130	12	100	155	H100	1.7
022 023	18	80	118	9	110	12	75	140	H75	1.0
	18	50 - 87	118	9	110	12	85	130	H85	1.2
	25	130	154	9	110	12	90	135	H90	1.5
	25	85	120	9	120	12	80	140	H80	1.1
	18	47.5 - 60	135	11	130	12	100	155	H100	1.7
032 033	30	165	195	14	135	14	115	170	H115	2.2
	30	100	150	11	150	14	110	185	H110	1.9
	18	70			160					
	35	110	160	14	170	14	120	210	H120	2.6
042 043	30	165	195	14	135	14	115	170	H115	2.2
	30	100	150	11	150	14	110	185	H110	1.9
	18	70			160					
	35	110	160	14	170	14	120	210	H120	2.6

CMG..H

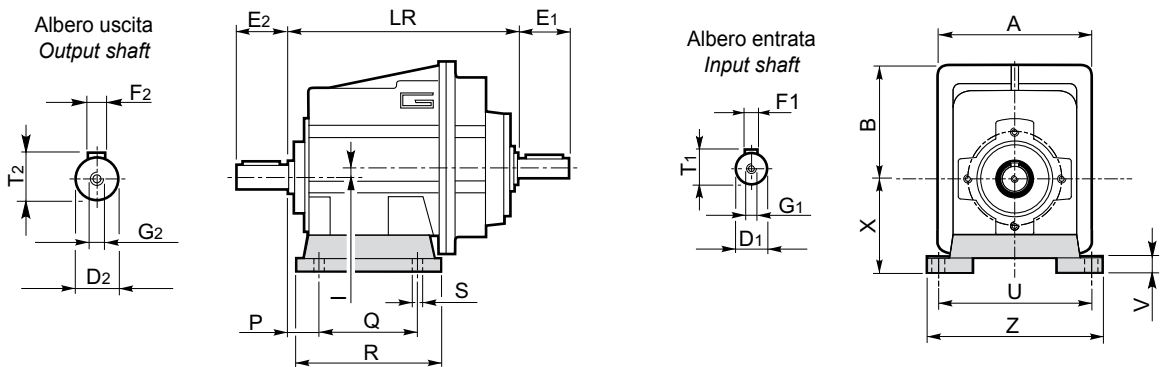
CMG..2 H..



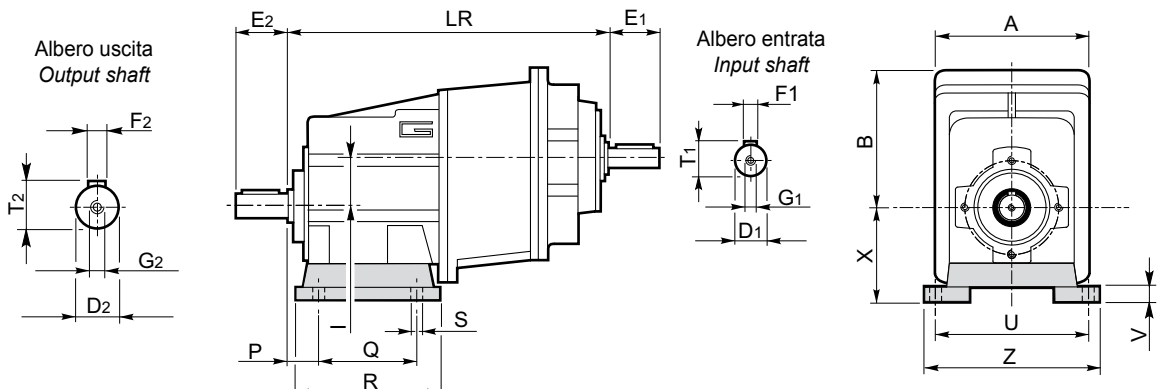
CMG..3 H..



CMGIS..2 H..



CMGIS..3 H..



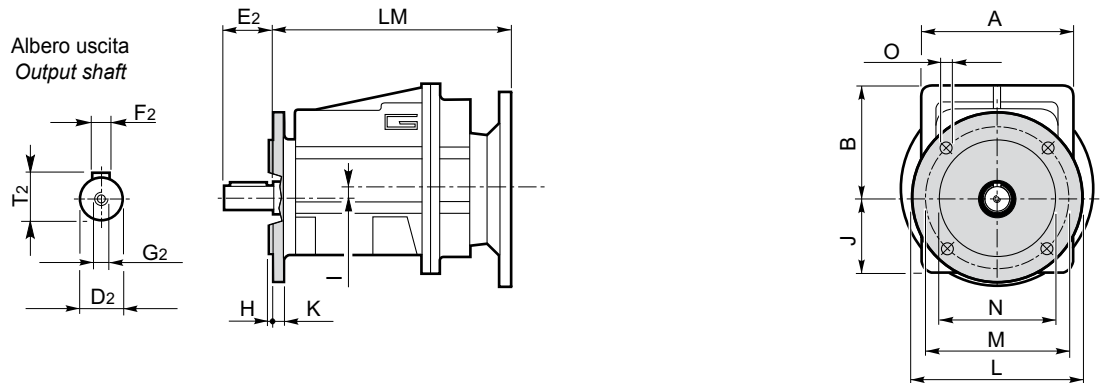
CMG CMGIS	A	B	I	j	LM	LR	Albero entrata / Input shaft					Albero uscita / Output shaft					Peso / Weight* [kg]	
							D ₁ h6	E ₁	F ₁	G ₁	T ₁	D ₂ h6	E ₂	F ₂	G ₂	T ₂	CMG	CMGIS
012	124	93	6.5	62	195	187	16	40	5	M6	18	20 (16) (25)	40 (40) (50)	6	M6	22.5 (18) (28)	5.3	5.0
013		112	43		268	260											7.8	7.5
022	124	98	11.5	67	205	197	16	40	5	M6	18	25	50	8	M8	28	6.2	5.9
023		117	48		278	270											8.7	8.4
032	156	118	5	92	237	229.5	19	40	6	M6	21.5	30	60	8	M10	33	11.3	11.2
033			41.5		303	295											16	5
042	156	128	15	82	250	242.5	19	40	6	M6	21.5	35	70	10	M12	38	13.2	13.1
043			51.5		316	308											16	5

* Versione U / U Version

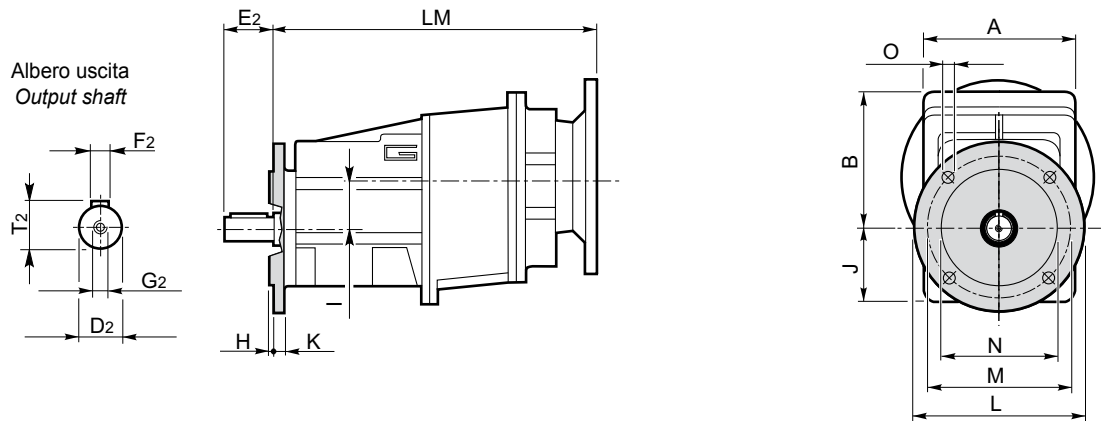
Versione F / F Version								
CMG CMGIS	H	K	L	M	N f7	O	Flangia / Flange	
							Tipo / Type	Peso / Weight [kg]
012 013	3	9	120	100	80	9	F120	0.5
	3.5	9	140	115	95	9	F140	0.8
	3.5	9	160	130	110	9	F160	1.1
022 023	3	9	120	100	80	9	F120	0.5
	3.5	9	140	115	95	9	F140	0.8
	3.5	9	160	130	110	9	F160	1.1
032 033	3.5	11	160	130	110	9	F160	1.0
	3.5	11	200	165	130	11	F200	1.8
042 043	3.5	11	160	130	110	9	F160	1.0
	3.5	11	200	165	130	11	F200	1.8

CMG..F

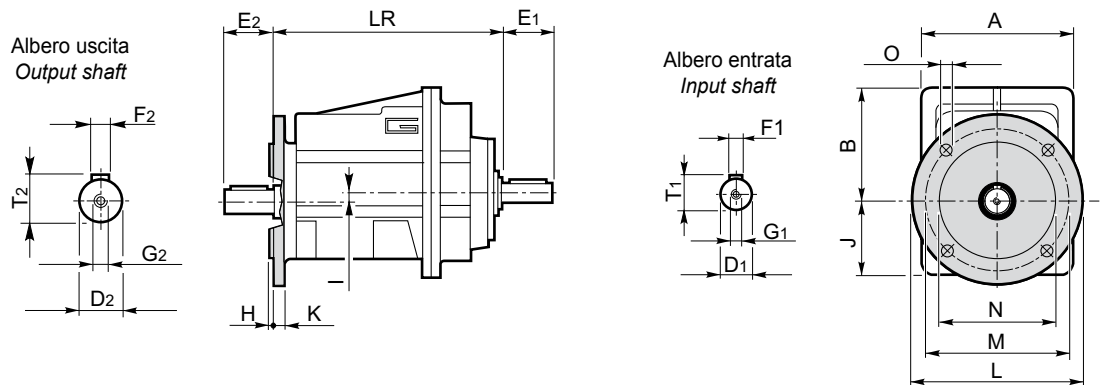
CMG..2 F..



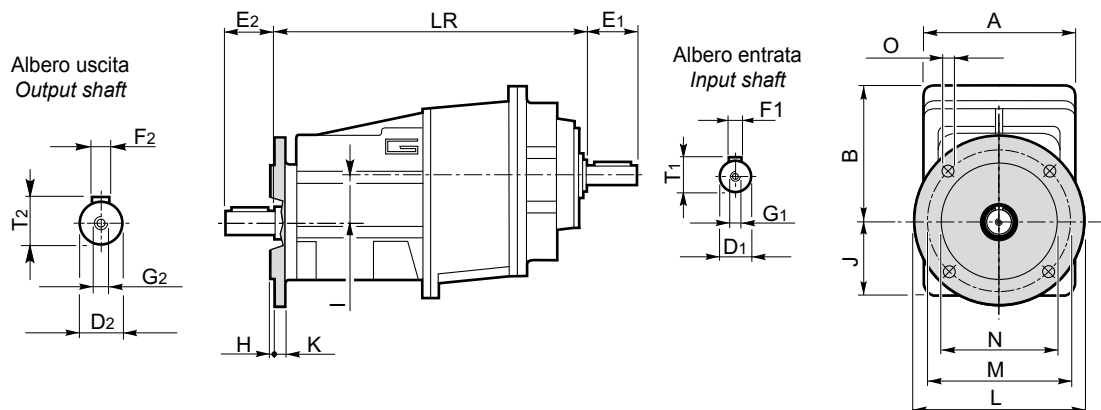
CMG..3 F..



CMGIS..2 F..



CMGIS..3 F..



CMG CMGIS	A	B	I	j	LM	LR	Albero entrata / Input shaft					Albero uscita / Output shaft					Peso / Weight* [kg]	
							D ₁ h6	E ₁	F ₁	G ₁	T ₁	D ₂ h6	E ₂	F ₂	G ₂	T ₂	CMG	CMGIS
012	124	93	6.5	62	195	187	16	40	5	M6	18	20 (16) (25)	40 (40) (50)	6	M6	22.5 (18) (28)	5.3	5.0
013		112	43		268	260											7.8	7.5
022	124	98	11.5	67	205	197	16	40	5	M6	18	25	50	8	M8	28	6.2	5.9
023		117	48		278	270											8.7	8.4
032	156	118	5	92	237	229.5	19	40	6	M6	21.5	30	60	8	M10	33	11.3	11.2
033			41.5		303	295											16	5
042	156	128	15	82	250	242.5	19	40	6	M6	21.5	35	70	10	M12	38	13.2	13.1
043			51.5		316	308											16	5

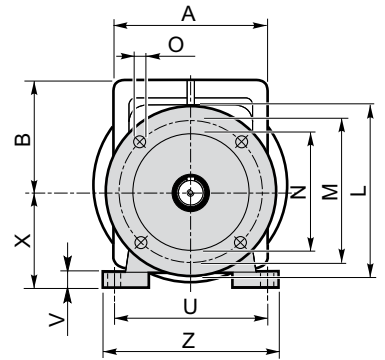
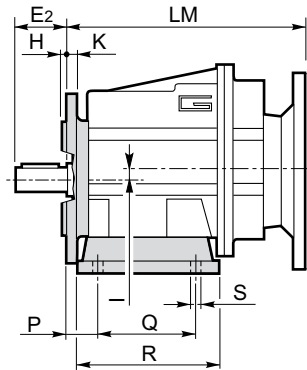
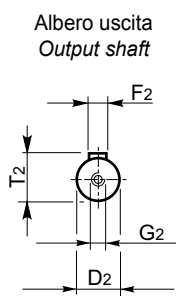
* Versione U / U Version

Versione H / H Version										
CMG CMGIS	P	Q	R	S	U	V	X	Z	Piede / Foot	
									Tipo / Type	Peso / Weight [kg]
012 013	18	80	118	9	110	12	75	140	H75	1.0
	18	50 - 87	118	9	110	12	85	130	H85	1.2
	25	130	154	9	110	12	90	135	H90	1.5
	25	85	120	9	120	12	80	140	H80	1.1
	18	47.5 - 60	135	11	130	12	100	155	H100	1.7
022 023	18	80	118	9	110	12	75	140	H75	1.0
	18	50 - 87	118	9	110	12	85	130	H85	1.2
	25	130	154	9	110	12	90	135	H90	1.5
	25	85	120	9	120	12	80	140	H80	1.1
	18	47.5 - 60	135	11	130	12	100	155	H100	1.7
032 033	30	165	195	14	135	14	115	170	H115	2.2
	30	100	150	11	150	14	110	185	H110	1.9
	18	70			160					
	35	110	160	14	170	14	120	210	H120	2.6
042 043	30	165	195	14	135	14	115	170	H115	2.2
	30	100	150	11	150	14	110	185	H110	1.9
	18	70			160					
	35	110	160	14	170	14	120	210	H120	2.6

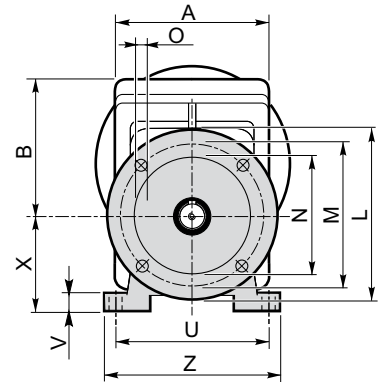
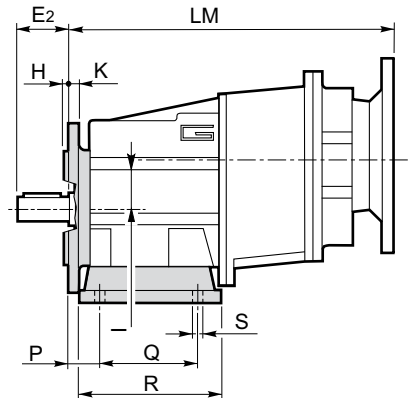
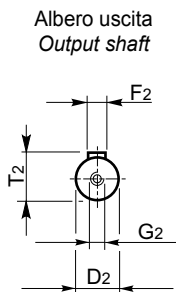
Versione F / F Version								
CMG CMGIS	H	K	L	M	N f7	O	Flangia / Flange	
							Tipo / Type	Peso / Weight [kg]
012 013	3	9	120	100	80	9	F120	0.5
	3.5	9	140	115	95	9	F140	0.8
	3.5	9	160	130	110	9	F160	1.1
022 023	3	9	120	100	80	9	F120	0.5
	3.5	9	140	115	95	9	F140	0.8
	3.5	9	160	130	110	9	F160	1.1
032 033	3.5	11	160	130	110	9	F160	1.0
	3.5	11	200	165	130	11	F200	1.8
042 043	3.5	11	160	130	110	9	F160	1.0
	3.5	11	200	165	130	11	F200	1.8

CMG..H../F..

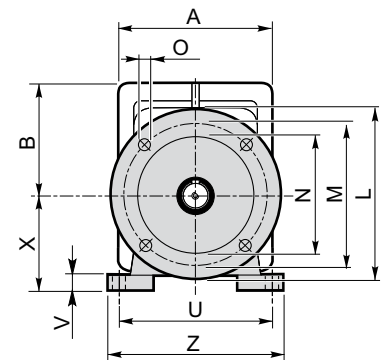
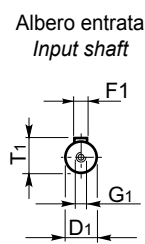
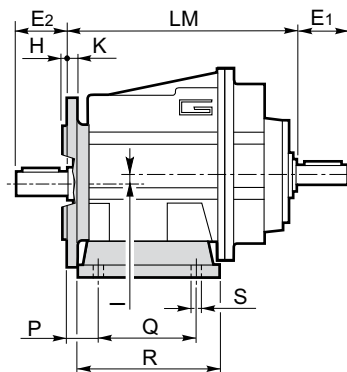
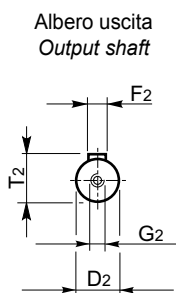
CMG..2 H../F..



CMG..3 H../F..



CMGIS..2 H../F..



CMGIS..3 H../F..

